

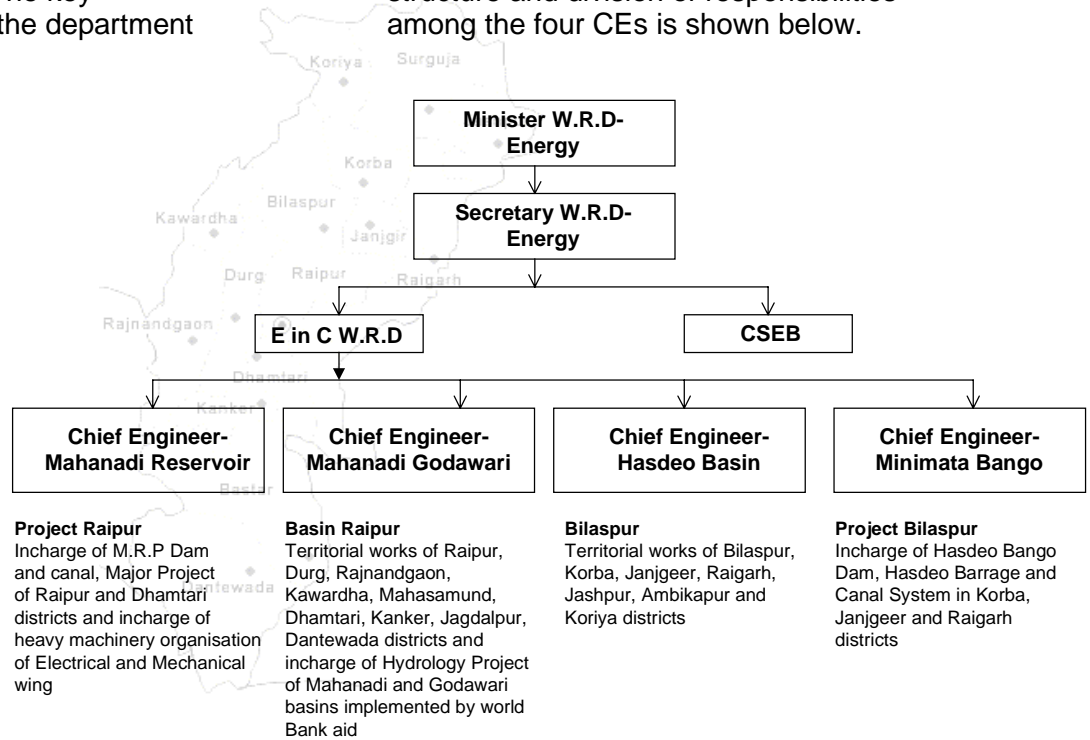
**Role of WRD**

The Water Resource Department (WRD) in Chhattisgarh has the mandate to manage the state’s water resources. The department is responsible for all surface water schemes in the state having Culturable Command Area(CCA) of more than 40 ha (*panchayats* are responsible for schemes having CCA less than 40 ha). The key responsibilities of the department include:

- Investigation for various schemes (major, medium and minor) for harnessing surface water
- Design of schemes
- Construction of schemes
- Operation & maintenance (O&M) of existing schemes
- Assessment of revenue for water supplied from surface water schemes for irrigation purposes
- Assessment of revenue for water used by industries, power plants or local bodies either from scheme reservoirs, canals or rivers
- Collection of assessed revenue
- Monitoring of groundwater resources in the state through various test-wells

**Organisation Structure**

With the formation of Chhattisgarh as a new state, WRD was formed by essentially retaining the organisation set-up under four Chief Engineers (CEs) located in Chhattisgarh. In its current set-up, the department is headed by an Engineer-in-Chief (E-in-C), and the four CE. The broad level organisation structure and division of responsibilities among the four CEs is shown below.



The set-up comprises 9 Circles (headed by Superintending Engineers or SEs), 59 Divisions (headed by Executive Engineers or EEs) and 290 Sub-divisions (headed by Assistant Engineers or AEs). The status of engineering cadre of the department is set out in the table overleaf.

Designation	Approved	Existing	Ratio
E-in-C	1	1	
CE	4	4	4.0
SE	20	19	4.8
EE	95	83	4.4
AE	700	567	6.8
Sub Engineer	1854	1506	2.7

The status of category-wise staffing of the department is shown in the table alongside. As can be observed Class III and Class IV officers constitute almost 89% of the total staffing of the department.

Staff Category	Approved	Existing
Class I	133	133
Class II	803	803
Class III	6118	6154
Class IV	1134	1134
	<b>8188</b>	<b>8224</b>

